

Technique Tuesday™

Clear Stamps and Accessories





Your Memories



Your Sentiments



Your Art...

Your Way

Technique Tuesday Clear Stamps and Accessories

At Technique Tuesday, we believe it should be fun and easy to highlight the photos in your scrapbook, to make handmade greeting cards that will touch the hearts of the people you love, and to create one-of-a-kind items to give as gifts or use to decorate your home. Using our clear stamps and accessories, you can choose from a variety of lettering styles and beautiful image stamps to create unique design elements in the color combinations that are right for your projects.

If you are new to stamping, consider a set of letter stamps in a style that you love. For truly one-of-a-kind projects, use our image stamps to create extraordinary embellishments and patterned backgrounds. Once you've used our stamps, you'll see that the advantages are — well... clear. You can see through the stamps and block to position the stamps in the right place on your project.

Technique Tuesday stamps work well with many ink pads, paints, and markers. If you already have ink pads, you'll enjoy using them with our clear stamps. If you are just starting to stamp, consider Technique Tuesday ink pads. Technique Tuesday inks combine rich pigments with premium dyes in a formula that will work on practically any surface. Our 36 luscious colors will stay true to color, are all waterproof, and are acid free. You'll enjoy having one set of ink pads for all your projects!

Technique Tuesday Technique Tiles and twill tape let you add subtle dimension and texture in the colors that are right for your project. Use them as is, add paint, or drag an inkpad over them and then stamp to make the perfect custom made embellishment for your next card or scrapbook page.

Technique Tuesday also offers accessories to help you care for your stamps. Our lightweight portfolio provides a convenient way to organize, transport, and protect your stamps and accessories. Our cleaning solution and scrubber help clean and condition your stamps. With proper cleaning and wise storage choices, your stamps will last for many years!

Easy to use, even easier to store and transport, with our clear stamps and accessories, you'll wish every day was...

Technique
*Tuesday*TM

4888 NW Bethany Blvd, Suite K5 #361
Portland, OR 97229

Tel: 503-644-4073
Fax: 503-961-1668

www.TechniqueTuesday.com

Copyright © 2006, Technique Tuesday
All Rights Reserved.

Avalon Alphabet Stamps

Since ancient times, Avalon has been a place of mystery and of enchantment. Avalon was home to one of Europe's greatest medieval abbeys, a place of pilgrimage for people of many faiths, and the resting place of King Arthur and Lady Guinevere. Now you can scrapbook the legends in your family, as the magic of the ancient Isle of Avalon lives on in this elegant and graceful alphabet.



(Actual Size)

Avalon Capital Letters - Large

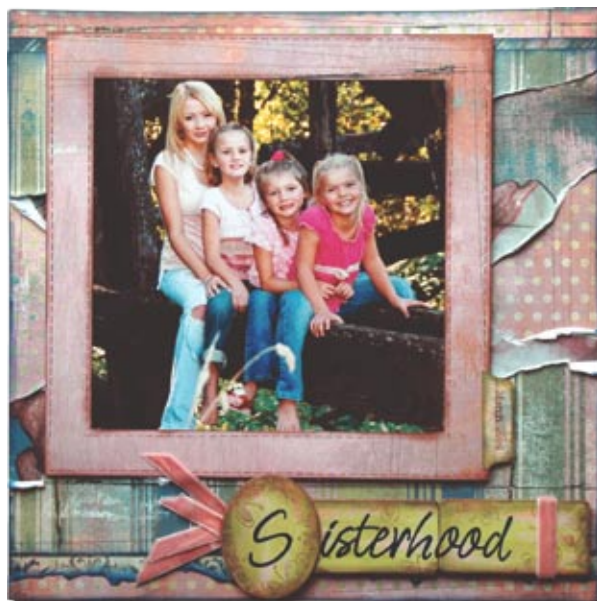
Code: AVCL



(Actual Size)

Avalon Lowercase Letters - Large

Code: AVLL



Brooklyn Bridge Alphabet Stamps

The Brooklyn Bridge takes one grand flying leap from shore to shore across the East River. With one great arch, colossal towers, and enormous cables, the Brooklyn Bridge is a work of beauty and bare utility. Not a shrine, not a fortress, not a palace, but a bridge. The strength and beauty of the Brooklyn Bridge lives on in the design of this classic, yet fresh, alphabet collection.

A A B C D E E
F G H I I J K
L M N N O O P
Q R R S S T T
U V W X Y Z



(Actual Size)

Brooklyn Bridge Capital Letters – Large

Code: BBCL

a a b c d e e f g
h h i i j k l m
n n o o p q r r s
s t t u v w x y z



(Actual Size)

Brooklyn Bridge Lowercase Letters – Large

Code: BBLL

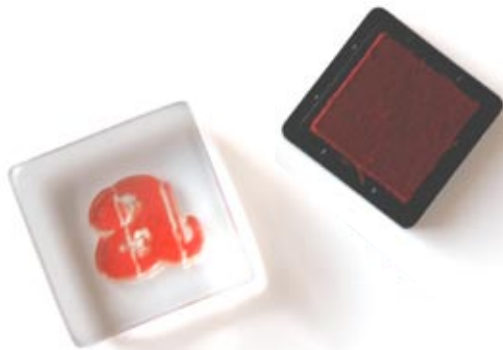
A B C D E
F G H I J
K L M N O
P Q R S T U
V W X Y Z



(Actual Size)

Brooklyn Bridge Capital Letters – Extra Large

Code: BBCX



a b c d e f g
h i j k l m n
o p q r s t u
v w x y z of the

a b c

(Actual Size)

Brooklyn Bridge Lowercase Letters – Extra Large

Code: BBLX



Big Timber Alphabet Stamps

Nestled at the foot of the Crazy Mountains is the town of Big Timber. Surrounded by big skies, big sheep, and big trees, the people of Big Timber live out their big dreams. When it comes time to capture your big dreams, the clean, bold letters from our Big Timber stamps will create compelling titles, accents, and embellishments.

A A B C D E E F
G H I I J K L M
N N O O P Q R S
S T T U V W X Y Z

A B C

(Actual Size)

**Big Timber Capital
Letters - Large**

Code: BTCL



a a b c d e e f g
h h i i j k l l m
m n n o o p q r r
s s t t u v w x y z

a b c

(Actual Size)

Big Timber Lowercase Letters - Large

Code: BTLL

A B C D E F
G H I J K L
M N O P Q R
S T U V W X
Y Z . ! ? , &
" " ~ / \ ^ ° .

A B C

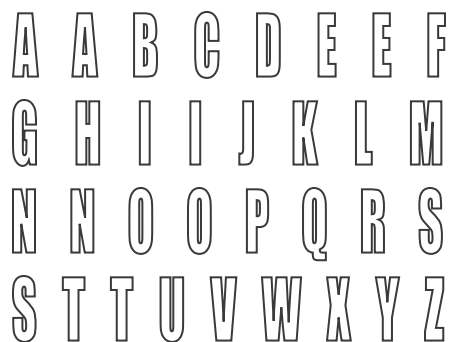
(Actual Size)

**Big Timber
Capital Letters - Tall**

Code: BTCT

Big Timber Line Alphabet Stamps

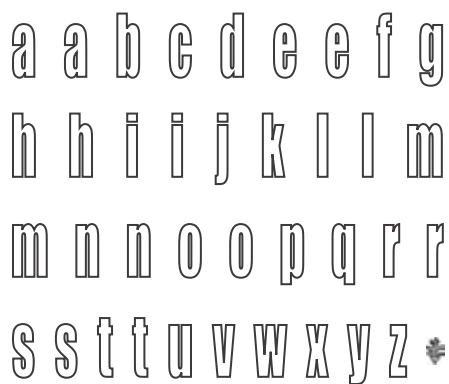
In their purest form, Big Timber Line letters are subtle and understated. These stamps create clean letter silhouettes that can be left as is in beautiful simplicity. Or get creative – use chalks, pens, or colored pencils to fill the letter outlines. These stamps are also the perfect compliment to our Big Timber collection. Stamp a solid, resounding letter with Big Timber. Then using a complementary color, stamp over the solid letter with a Big Timber Line stamp to create a defining edge. You'll find many ways to use these Big Timber Line stamps.



(Actual Size)

Big Timber Line Capital Letters – Large

Code: BLCL



(Actual Size)

Big Timber Line Lowercase Letters – Large

Code: BLLL



(Actual Size)

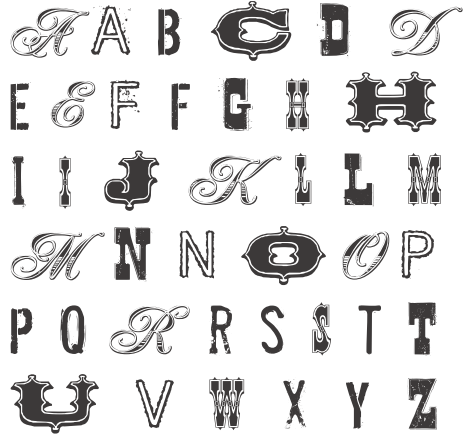
Big Timber Line Capital Letters – Tall

Code: BLCT



CALAMITY JANE Alphabet Stamps

With courage and good-fellowship, she ventured into places where old frontiersmen were too yellow-bellied to go. She drove a wagon train, was a daring scout in the army, and was one of the best shots in the Wild West. Many remembered her as being rough and rustic. Yet according to Wild Bill, her feminine charms were full of flourish and panache. The Calamity Jane alphabet is rough around the edges with extra letters to add flair and panache in true Calamity Jane style.



(Actual Size)

Calamity Jane Capital Letters – Large

Code: CJCL



Cosmopolitan **Alphabet Stamps**

Our Cosmopolitan alphabet stamp collection is sophisticated yet fanciful. These stamps are the perfect complement to everything from tea parties and weddings to trick-or-treating and trampolines. Fun and whimsical with a distinctly elegant flair, you're going to love these letters.

A A B B C C D D
E E F F G G H H I
J J K L L M M N N
O O P P Q R R S S
T T U U V W X Y Z
. ! ? & / , " ' - ^ ° ~ ~ ~

(Actual Size)

Cosmopolitan Capital Letters and Punctuation – Medium

Code: CMCM

a a a b b c c d d d
e e e f f g g h h i i j
k l l m m n n o o p
p p q r r r s s s t t t u u
v w x y y z \$ ¢ ½ % #
0 0 1 1 2 2 3 3 4 4
5 5 6 6 7 7 8 8 9 9

(Actual Size)

Cosmopolitan Lowercase Letters and Numbers – Medium

Code: CMLM

A B C D E F G
H I J K L M N
O P Q R S T U
V W X Y Z ~
♣

(Actual Size)

Cosmopolitan Capital Letters – Large

Code: CMCL

a b c d e f g h
i j k l m n o p q
r s t u v w x y z

(Actual Size)

Cosmopolitan Lowercase Letters – Large

Code: CMLL

Eiffel Tower Alphabet Stamps

At the center of one of the world's most cosmopolitan cities, the Eiffel Tower is authentically Parisian. With 1,652 steps to the top, the tower has inspired artists, architects, and daredevils alike. It is also a haven of peace, a symbol of vitality, and a reminder of the elegance of the age of aristocrats. Our Eiffel Tower alphabet is certain to make its namesake proud. Tall and lean with thoughtful lines and powerful serifs, this alphabet will be a high point on your paper crafting skyline!

ABCDEFGHIJK
LMNOPQRSTU
VWXYZ.!?&'”
“ ~ / \ ^ • °
T A I T H O A B F I T
O D N E F E R S T

A B C

(Actual Size)

Eiffel Tower Capital Letters – Tall

Code: ETCT

abcdefghijklmnop
qrstuvwxyz -) }



a b c

(Actual Size)

Eiffel Tower Lowercase Letters – Tall

Code: ETLT

Farmhouse Alphabet Stamps

Our Farmhouse alphabet stamps evoke feelings of relaxed and carefree summer days, doodling in a hammock, or taking in the view from the wrap around porch. Sketchy, yet classy, these letters will work beautifully on distressed and modern pages, as well as on puddle-jumping, bug-gathering, children-focused layouts. The combination of comfort and style is irresistible.

A B C D E F
G H I J K L M
N O P Q R S T
U V W X Y Z




(Actual Size)

Farmhouse Capital Letters - Large

Code: FHCL

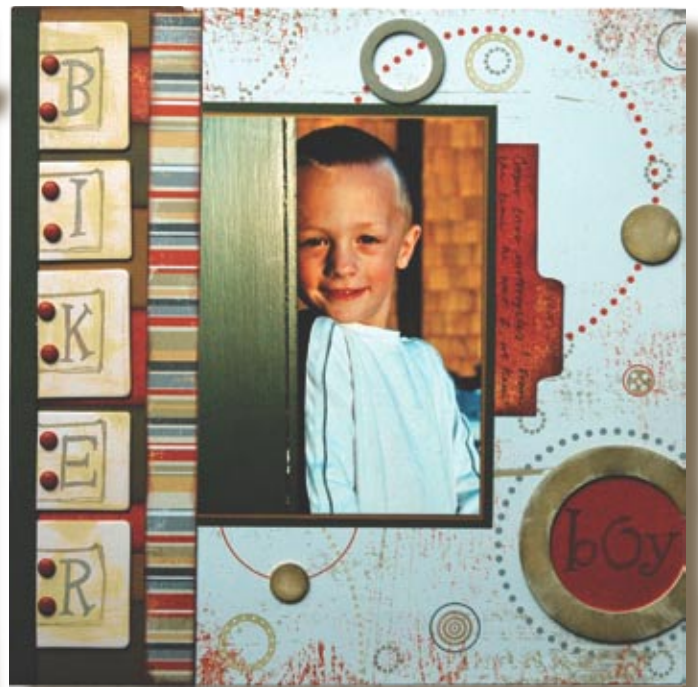
a b c d e f g
h i j k l m n
o p q r s t u
v w x y z □



(Actual Size)

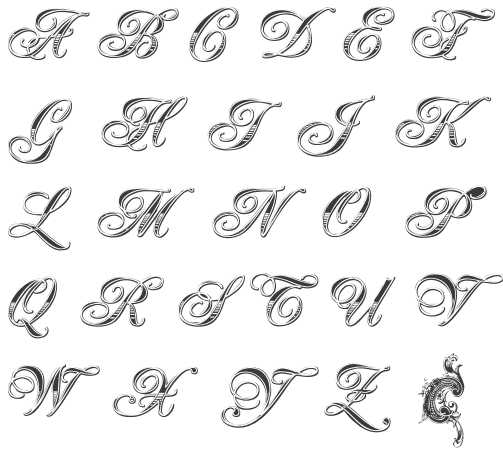
Farmhouse Lowercase Letters - Large

Code: FHLL



French Quarter Alphabet Stamps

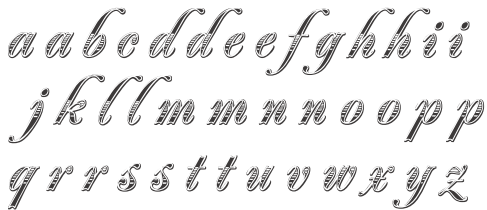
The French Quarter possesses a proud and magnificent heritage. As New Orleans recovers, the elegant architecture, sublime music and mysterious rituals of the French Quarter beckon. The aromas of fresh-baked goods, coffee, and Creole spices are returning. Once again profusions of tropical flowers are starting to peek from hidden courtyards. A vibrant cacophony of music, conversation, and laughter infuses the atmosphere with promise. We feel the same about our French Quarter alphabet stamps; distinctive and classic, this alphabet is full of élan, well suited for a variety of paper crafting projects.



(Actual Size)

French Quarter Capital Letters – Large

Code: FQCL



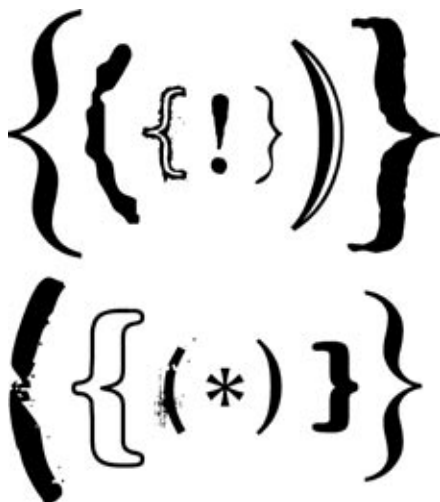
(Actual Size)

French Quarter Lowercase Letters – Large

Code: FQLL

Funcuation Character Stamps

It's punctuation and it's so much fun! Sized to fit with our large, extra large, and tall alphabet stamps, these funcuation marks are the perfect accent to any paper crafting project.



(Actual Size)

Funcuation

Code: FUNC



Harbor Side Alphabet Stamps

On a recent sailing trip in the San Juan Islands, we were inspired to make these letter stamps based on signs we saw around the harbor. Island ambiance and a dash of mystique combine to create an unforgettable experience. Long and lean, with soft curves and sensibilities, these stamps have a universal appeal that any scrapbooker or paper crafter will love.

A B C D E F
G H I J K L M
N O P Q R S
T U V W X Y Z

A B C

Harbor Side Capital Letters – Extra Large

Code: HSCX

a b c d e f g h i
j k l m n o p q
r s t u v w x y z
and an a & of for the

a b c

Harbor Side Lowercase Letters – Extra Large

Code: HSLX



Make Believe Alphabet Stamps

Make Believe letters are a unique blend of elegant calligraphy and casual brush strokes. The result is a handwritten look that you can adapt to fit nearly any project. Use gold ink to add elegance. Add some bright dots for a funky hip project. Or use these letters with black ink to finish any of your works of art. These sets are a must have for scrapbookers and other artists will love them too.

A A B B C C D D E E
 F F G G H H I I J J K L
 L M M N N O O P P
 Q R R S S T T U U V W
 W Y Y Z &!?-...,""

A B C

(Actual Size)

**Make Believe Capital Letters
 and Punctuation – Medium**

Code: MBCM



a a b b c c d d e e e
 e f f g g h h i i j k l l m
 m n n n o o o p p p q r r
 r s s s t t t u u v w x y z
 0 0 1 1 2 2 3 3 4 4
 5 5 6 6 7 7 8 8 9 \$

a b c

(Actual Size)

Make Believe Lowercase Letters – Medium

Code: MBLM

A B C D E F G
 H I J K L M N
 O P Q R S T U
 V W X Y Z

A B C

(Actual Size)

Make Believe Capital Letters – Large

Code: MBCL


a b c d e f g h i j
 k l m n o p q r s
 t u v w x y z

a b c

(Actual Size)

Make Believe Lowercase Letters – Large

Code: MBLL

1 2 3 4 5 6
7 8 9 0 & .
! ? " - ' 

1 2 3

(Actual Size)

Make Believe Numbers and Punctuation – Large

Code: MBNL

Reminisce Alphabet Stamps

Like age-old family stories passed down through generations, the chronicles and anecdotes we detail in our scrapbooks beg to be written by hand. We all wish we loved our handwriting but most of us write more like doctors than artists. Relaxed and refined, the Reminisce alphabet will give you the personal, handwritten look without the pressure and anxiety of getting every letter letter-perfect.

A A B C D E E
F G H I I J K
L L M N N O O P
Q R R S S T T
U V W X Y Z *

A B C

(Actual Size)

Reminisce Capital Letters – Large

Code: RMCL

a a b b c c d
d e e f f g h
h i i j k l l m
m n n o o p
p q r r s s t
t u v w x y z

a b c

(Actual Size)

Reminisce Lowercase Letters – Large

Code: RMLL



Santa Cruz Alphabet Stamps

Santa Cruz is the quintessential beach town. It was here that Hawaiian royalty first introduced surfing to the mainland—and locals and visitors alike have been riding the waves ever since. The pedestrian-friendly, tree-lined streets are filled with vibrant shops and galleries. Outdoor bistros and sidewalk musicians are all part of this surf city's offbeat personality. The Santa Cruz alphabet maintains the offbeat personality of the city... quirky, comical, and creative, and is sure to strike a perfect chord with you.

A A B C D E E
F G H I I J K
L M N N O O P
Q R S S T T
U V W X Y Z 🌴

A B C

(Actual Size)

Santa Cruz Capital Letters – Large

Code: SCCL

a a b c d e e F g
H i i j k l l m n
N o o p q r r s s
t t u v w x y z

a b c

(Actual Size)

Santa Cruz Lowercase Letters – Large

Code: SCLL

A B C D E E
F G H I J K
L M N O P
Q R S T U
V W X Y Z

A B C

(Actual Size)

Santa Cruz Capital Letters – Extra Large

Code: SCCX



a b c d e F g H
i j K L M N o p
q r S t U v W X
y z < @ * { } 🌴

a b c

(Actual Size)

Santa Cruz Lowercase Letters – Extra Large

Code: SCLX



Wayfarer Alphabet Stamps

Wayfarer alphabet stamps are classic with a lighthearted touch. Create an elegant card, a whimsical scrapbook page that highlights photos of children, or a title on the front of a travel journal. This unique lettering style will take you from serious themes to playful subjects.

A A B B C C D D E E
F F G G H H I I J K L
L M M N N O O P P Q
R R S S T T U V W W
X Y Z & ! ? \$ - . . . , “ ”

A B C

(Actual Size)

**Wayfarer Capital Letters
and Punctuation – Medium**

Code: WFCM

a a a b b c c d d d e
e e e f f g g h h i i i
j k l l l m m n n n o
o o p p p q r r r s s s
t t t u u v w x y y z
1 1 2 2 3 3 4 4 5
5 6 7 7 8 8 9 0 0

a b c

(Actual Size)

**Wayfarer Lowercase Letters
and Numbers – Medium**

Code: WFLM

A B C D E F G H
I J K L M N O P
Q R S T U V W
X Y Z □ ∞

A B C

(Actual Size)

Wayfarer Capital Letters – Large

Code: WFCL

a b c d e f g
h i j k l m n o
p q r s t u v
w x y z □

a b c

(Actual Size)

Wayfarer Lowercase Letters – Large

Code: WFLL

1 2 3 4 5
6 7 8 9 0
. ? ! & “ ’ -

1 2 3

(Actual Size)

Wayfarer Numbers and Punctuation – Large

Code: WFNL



A B C D E
F G H I J
K L M N O
P Q R S T
U V W X Y
Z ! , " . - ?

(Actual Size)

Williamsburg Capital Letters – Extra Large

Code: WMCX

a b c d e f
g h i j k l m
n o p q r s t
u v w x y z

(Actual Size)

Williamsburg Lowercase Letters – Extra Large

Code: WMLX

1 2 3 4 5
6 7 8 9 0
& / ~ ~ ~ ~ ~

(Actual Size)

Williamsburg Numbers – Extra Large

Code: WMNX

Technique Tuesday Words We Love Stamp Sets

Our "Words We Love" stamp sets make it easy to create your own patterned paper, design a one of a kind embellishment for your scrapbook page, express your feelings in a special card, or make a unique gift tag. We've carefully put together unique combinations of words and lettering styles to ensure that each set provides amazing flexibility for all your stamping needs. You are sure to find the perfect "Words We Love" stamp for your next project. And you'll be amazed at the incredible projects that you can make!

9	2000	<table border="1"><tr><td>1</td><td>2</td><td>3</td><td>4</td><td>5</td><td>6</td><td>7</td></tr><tr><td>8</td><td>9</td><td>10</td><td>11</td><td>12</td><td>13</td><td>14</td></tr><tr><td>15</td><td>16</td><td>17</td><td>18</td><td>19</td><td>20</td><td>21</td></tr><tr><td>22</td><td>23</td><td>24</td><td>25</td><td>26</td><td>27</td><td>28</td></tr><tr><td>29</td><td>30</td><td>31</td><td></td><td></td><td></td><td></td></tr></table>	1	2	3	4	5	6	7	8	9	10	11	12	13	14	15	16	17	18	19	20	21	22	23	24	25	26	27	28	29	30	31				
1	2	3	4	5	6	7																															
8	9	10	11	12	13	14																															
15	16	17	18	19	20	21																															
22	23	24	25	26	27	28																															
29	30	31																																			
8	2001	<table border="1"><tr><td>1</td><td>2</td><td>3</td><td>4</td><td>5</td><td>6</td><td>7</td></tr><tr><td>8</td><td>9</td><td>10</td><td>11</td><td>12</td><td>13</td><td>14</td></tr><tr><td>15</td><td>16</td><td>17</td><td>18</td><td>19</td><td>20</td><td>21</td></tr><tr><td>22</td><td>23</td><td>24</td><td>25</td><td>26</td><td>27</td><td>28</td></tr><tr><td>29</td><td>30</td><td>31</td><td></td><td></td><td></td><td></td></tr></table>	1	2	3	4	5	6	7	8	9	10	11	12	13	14	15	16	17	18	19	20	21	22	23	24	25	26	27	28	29	30	31				
1	2	3	4	5	6	7																															
8	9	10	11	12	13	14																															
15	16	17	18	19	20	21																															
22	23	24	25	26	27	28																															
29	30	31																																			
7	2002	<table border="1"><tr><td>1</td><td>2</td><td>3</td><td>4</td><td>5</td><td>6</td><td>7</td></tr><tr><td>8</td><td>9</td><td>10</td><td>11</td><td>12</td><td>13</td><td>14</td></tr><tr><td>15</td><td>16</td><td>17</td><td>18</td><td>19</td><td>20</td><td>21</td></tr><tr><td>22</td><td>23</td><td>24</td><td>25</td><td>26</td><td>27</td><td>28</td></tr><tr><td>29</td><td>30</td><td>31</td><td></td><td></td><td></td><td></td></tr></table>	1	2	3	4	5	6	7	8	9	10	11	12	13	14	15	16	17	18	19	20	21	22	23	24	25	26	27	28	29	30	31				
1	2	3	4	5	6	7																															
8	9	10	11	12	13	14																															
15	16	17	18	19	20	21																															
22	23	24	25	26	27	28																															
29	30	31																																			
6	2003	January 19 20																																			
5	2004	February pm																																			
4	2005	March am																																			
3	2006	April																																			
2	2007	May																																			
1	2008	June																																			
0	2009	, July August																																			
9	2010	: September October																																			
8	2011	\ November December																																			

January

1	2	3	4	5	6	7
8	9	10	11	12	13	14
15	16	17	18	19	20	21
22	23	24	25	26	27	28
29	30	31				



(Actual Size Above)

A Day to Remember

Code: KDTR

As days go by, those special unforgettable moments gradually slip into the recesses of our minds and hearts. The days we swore we would never forget subside to distant recollections. This great date set will enable you to label all of your precious memories with as much or as little precision as you require.

BABY Newborn
 Our Little *Angel*
 Adorable Sweet Dear
Heaven Sent Cuddle
 Pure Child of Mine
Precious new Perfect
 Welcome TINY Little One
 Hopes & Dreams Cute
 Cherished **LOVE**

Precious **BABY**

(Actual Size Above)

Babies We Love

Code: KBWL

From head to toe and all points in between, how do you label a miracle? Our Babies We Love stamp collection provides words and feelings in lettering styles to match the wonder and amazement of those first few months. These words are perfect for stamping on ribbon, creating a word frame, or making patterned paper. Whether you are stamping a baby shower invitation, a welcome baby picture frame, or a special new baby gift album, you will have everything you need to express your creativity and share your love for that new baby.



BOY EXPLORER

Loving Smart
WILD Handsome
 Charming **Big** Sweet
Energetic Pure
Genuine **BRAVE**
 Cute 100% **TOUGH**
Rugged Curious
GROWING Little

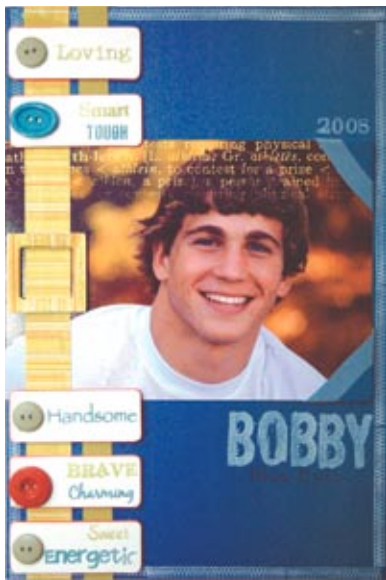
100% BOY

(Actual Size Above)

Boys We Love

Code: KBYL

Vast and varied, the boys in our lives are just plain hard to pin down. The Boys We Love collection of 20 word stamps offers insights into the tough and rugged boy, the curious and sweet child, and the boy who is all those things in one muddy little package. Sized for scrapbooking, card-making, and fun embellishments, the exuberant and dynamic lettering styles of these words are perfect for the rough and tumble little ones (or the full grown boys) in your life.



FAT CAT

Frisky Feline The Cats Meow
 PURRRRRSONALITY Nap
 Cuddly lazy PLEASANT
 HAIRBALL 9 Lives
 Pawsitively Purrfect
 Pretty Kitty Cat Lover
 Meow Pals COOL CAT
 PAWS & CLAWS *Datitude*

CAT Nap

(Actual Size Above)

Cats We Love

Code: KCWL

Purr... Leonardo Davinci wrote that even the smallest feline is a masterpiece. Mark Twain held that a meow massages the heart. Cat lovers everywhere will love this stamp set just as much. Use it on twill to make custom ribbons, as a background pattern, or anywhere else that needs a pawsitively purrrfect touch to capture the way you feel for your feline.

GOOD DOG Bad
Girl **MUTT** *Boy*
BEST  **LOYAL**
FRIEND **COMPANION**
 walk **WOOF** **CHEW** **Sit**
 fetch roll over 
DIG DIRT Y **NO!**
 Cold Nore Pedigree
 Warm Heart **FAITHFUL**
TOP DOG *Best in Show*
 Doghouse **PUPPY LOVE**

GOOD DOG

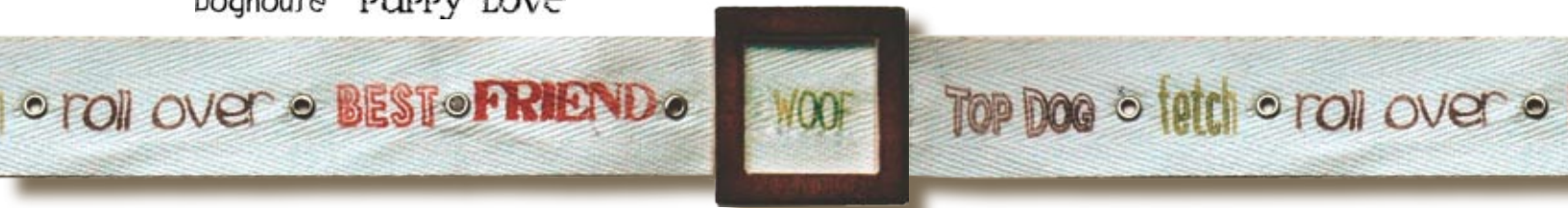


(Actual Size Above)

Dogs We Love

Code: KDWL

It has been said that a dog is the only thing on earth that will love you more than you love yourself. We know how much you love your dog. You want your scrapbook pages and paper crafting projects to show off your furry friends fittingly! We have crafted this stamp set with you in mind. It's perfect for stamping on twill, creating backgrounds in large format albums, or titles in smaller format albums and paper crafting projects.



Friends
FOREVER *Best*
Me & My
You are
For True

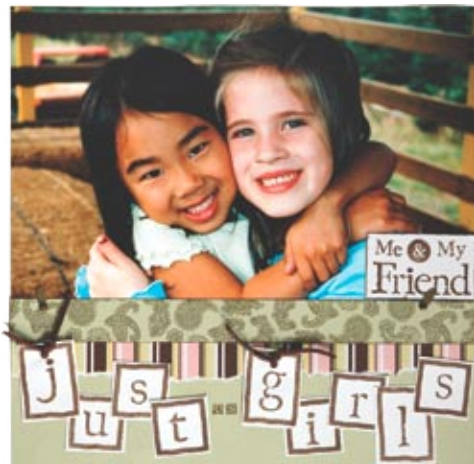

Best
Friend

(Actual Size Above)

Friends We Love

Code: KFWL

The friends we love see us through hard times and celebrate our successes. True friends are hard to find—best friends sometimes last forever. Celebrate the friends in your life on tags, cards, and any size scrapbook page, and tell them how much you appreciate them with the Friends We Love collection.



PREPPY Get Over It
fashionista **COME ON**
 TEXT ME *Whatever* **EDGY**
Boy GIRL FRIEND S
CHILLIN' **BANGIN' OUT**
Sassy That's Hot **LOL**
Teen Spirit *Sweet Bling*
Chic **FRESH** **attitude**

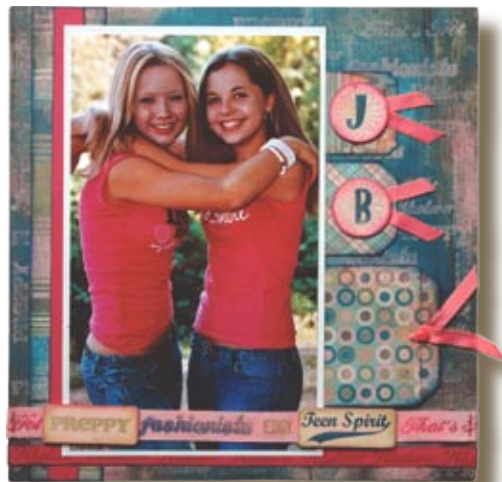
PREPPY FRESH Teen Spirit

(Actual Size Above)

Generation Gap

Code: KGG

Full of attitude, promise, and exuberance... the young people in our lives are the focus of our paper crafting projects. From middle school to young adulthood, they play sports, text-message friends, participate in drama, dance, and study for exams. There may be a gap in our understanding of their words and their ways but this fresh generation is destined for greatness. Your scrapbook pages will show it and your peeps will think it is *da bomb!*



*Girl Adorable Play
 growing Precious
 Little Tomboy Style
 100% Beautiful
 Genuine Curious
 Pure Cute Smart
 BIG Funny Girl Talk
 Princess Giggle Kind
 Sweet Sassy Diva*

Genuine Girl

(Actual Size Above)

Girls We Love

Code: KGWL

They are dainty yet confident, tough and playful tomboys, and smart little princesses; where would we be without the treasured little girls in our lives? Combine these 24 individual word stamps to make a fun patterned background that fits the specifics of your little one. Or use one or two of the word stamps to frame a photo, make a border around a scrapbook page, or embellish a tag for a special gift. We know you'll use the words in this set to celebrate and foster the individuality, intellectual curiosity, and imagination in the girls around us.

★ **HAPPY BIRTHDAY** ☺
 Best Wishes ☺
 & ☺ Thank You
 Thinking of You ☺
 Congratulations ◆
 just a little note
 ☺ **GOOD LUCK** ★



HAPPY BIRTHDAY



Thinking of You

(Actual Size Above)

Simple Sentiments

Code: KSS

Whether you are a creative card artist or a scrapbook innovator, this set is sure to strike a chord with you. With sentiments to craft a year 'round card collection or celebrate a year's worth of momentous occasions in your scrapbook, this set puts the "fun" back into functional!

Truly, Madly, Deeply I ♥ YOU
 Tenderness Happiness Delight
TRUE Love Bliss Joy
 Forever Irresistible Devotion
 Adore Treasure Embrace
 Precious Soul Mate Sweetheart
 Trust *love* Cherish
 Hold Me Kiss Me Thrill Me

Joy Kiss Me *Love*

(Actual Size Above)

Truly, Madly, Deeply

Code: KTMD

Love is such a powerful thing. There may be no words to effectively define it but our Truly, Madly, Deeply stamp set will help you find the perfect words for scrapbook pages, cards, tags, and all paper crafting projects for everyone and everything you love.

Love Dream Joy
LAUGH Believe
 Live **TREASURE**
 Adventure Create
IMAGINE Journey
 Discover Destiny
 Wish Remember
 Forever Cherish
EXPLORE Hope
 I love you Inspire

Live Love **LAUGH**

(Actual Size Above)

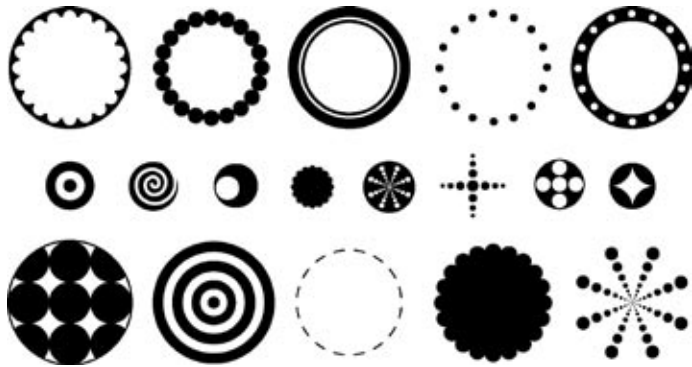
Words We Love

Code: KWWL

Our collection of Words We Love stamps really do speak for themselves. Although these aren't necessarily the most commonly used words in scrapbooking, card-making, and paper crafting, these are the words of our lives... of the moments and events that leave the deepest impressions on our hearts. Whether you are creating a card, a scrapbook layout, or a three dimensional work of art, we know you'll find the words you love in this set of 21 stamps.

Technique Tuesday Background and Image Stamps

Do you love the look of pre-made embellishments but can't find them in the right color for your project? Are you one of those people who has a warehouse of patterned paper but has a hard time actually using it? Technique Tuesday Background and Image stamps are designed to let you create unique embellishments and patterned paper in the colors you want. You'll use these stamps over and over again to add whimsy, texture, and just the right touch to your artwork.

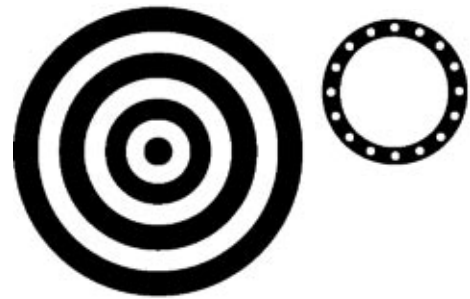
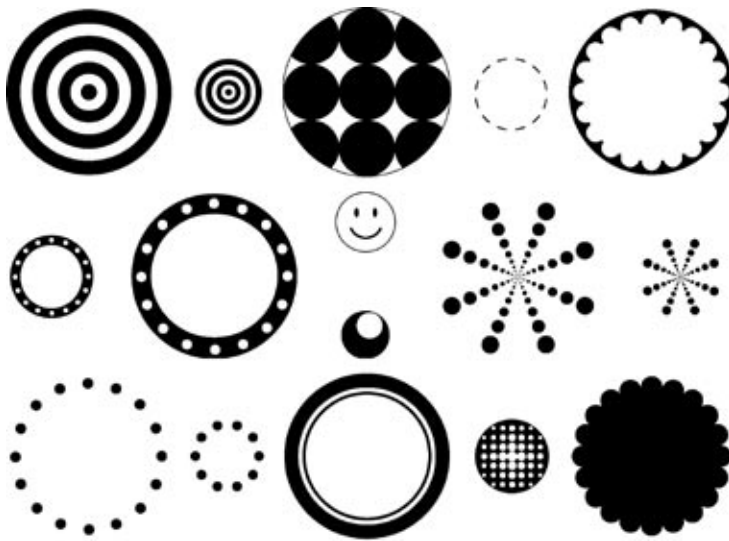


(Actual Size Above)

BackGrounds - Medium

Code: ISBM

Use sweet-tart pastels or ultra-vivid hues to create an accent, make your own border, or do an entire patterned background — like a circle, the possibilities are endless.



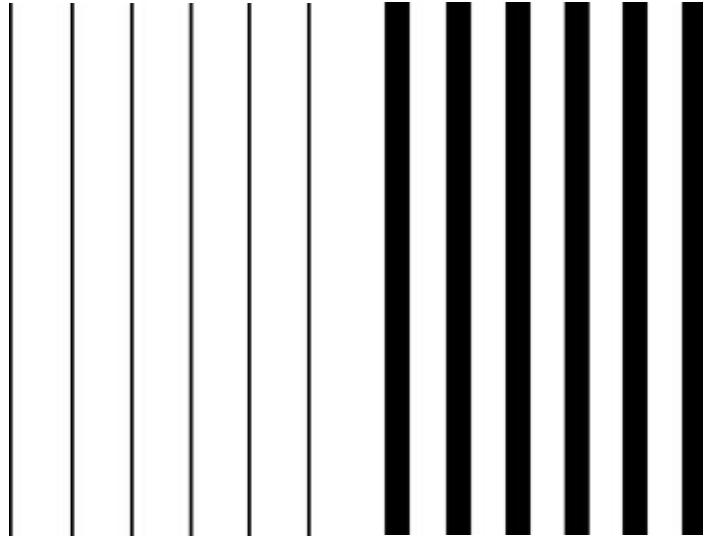
(Actual Size Above)

BackGrounds - Large

Code: ISBL

Funky and hip, clean and simple, or bohemian chic... these circle stamps can do it all.





(Actual Size Left)

Dry Clean Only

Code: ISDC

Choose your color scheme and go for the fresh clean look of stripes with this great set of lined stamps. You can mix the wide lines with the narrow ones in two colors for a fun and sporty look. Or cross the lines in complementary inks for a fun plaid effect. You can even turn the stamps horizontally to create journaling lines. Whatever suits your style!

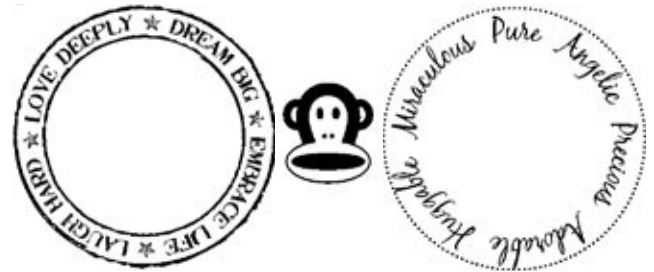
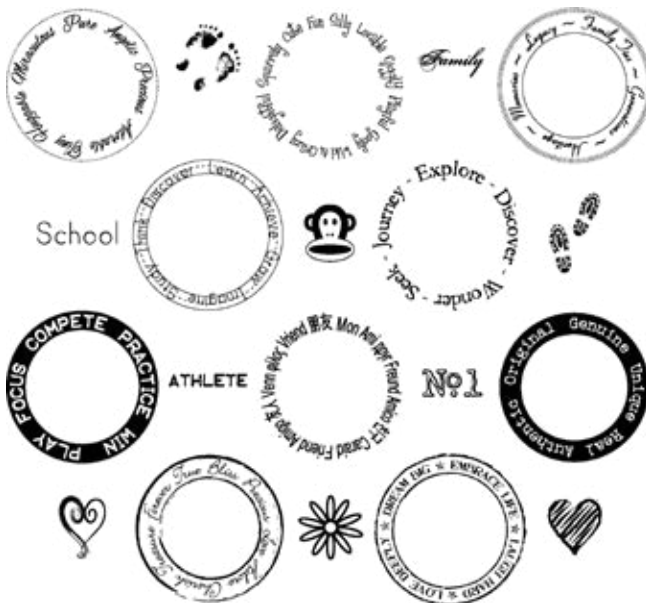
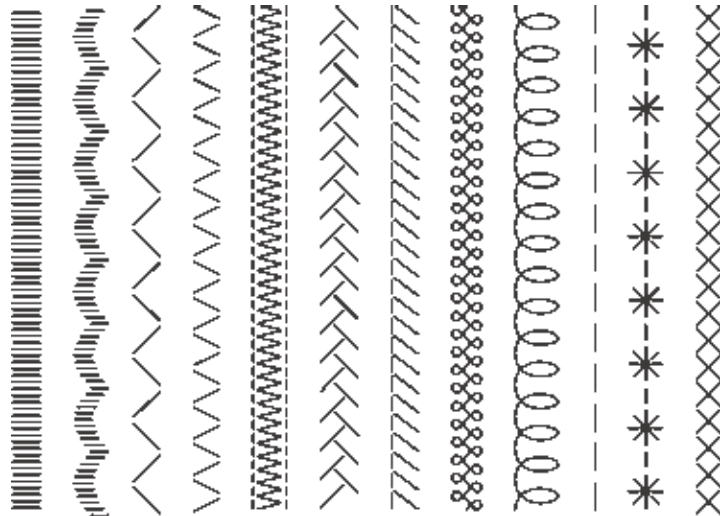


(Actual Size Left)

Hanging By a Thread

Code: ISHT

Forget dragging out the big, clunky sewing machine. This stamp set provides the finishing touch for every craft project. Add a stitch along the edge of your card, tag, or scrapbook page. Or bend these stamps to match the corners and curves of your project elements. You choose the color, stitch, and style to create a beautiful finished edge. With so many stitches to choose from, you'll find the perfect fit for any project.

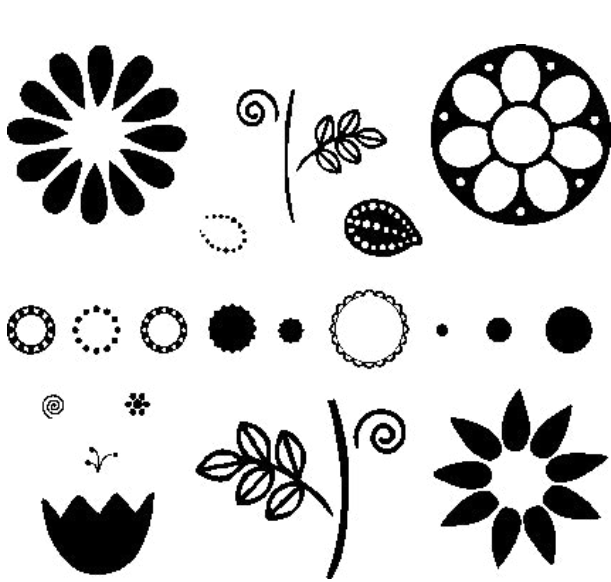


(Actual Size Above)

Infinite Wisdom - Times to Treasure

Code: ISTT

Boundless, never-ending wisdom — we know you'll find infinite ways to use these fabulous stamps! Create a frame around a letter in a title. Make an official seal to embellish your next card. Stamp a background to celebrate a priceless moment. We're delighted to share our Infinite Wisdom stamp collection with you.

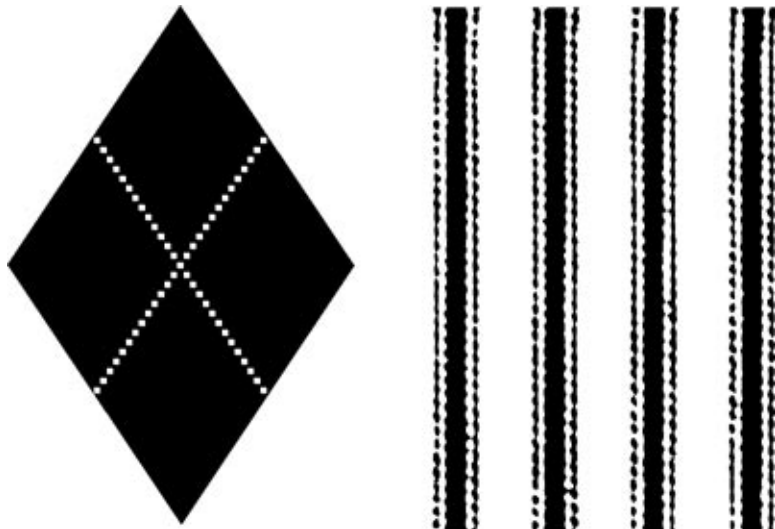


(Actual Size Above)

Just Picked

Code: ISJP

Fresh, clean, and creative, this floral arrangement will never wilt. With endless possibilities for petals, centers, and leaf combinations, you can construct one-of-a-kind flowers. As a patterned background, embellishment, or card centerpiece, this collection will make your creativity bloom!



(Actual Size Left)

Lay Flat to Dry

Code: ISLF

Line this argyle up (aren't you glad the stamp is clear?) to create a fabulous background paper or title block. Or use selective inking on only one of the four harlequins for a different look. Stamp the ticking stripes in any color you want on canvas, twill or even paper to create a fresh fabric look, at a fraction of the price. You're going to love the things you create with this stamp set.

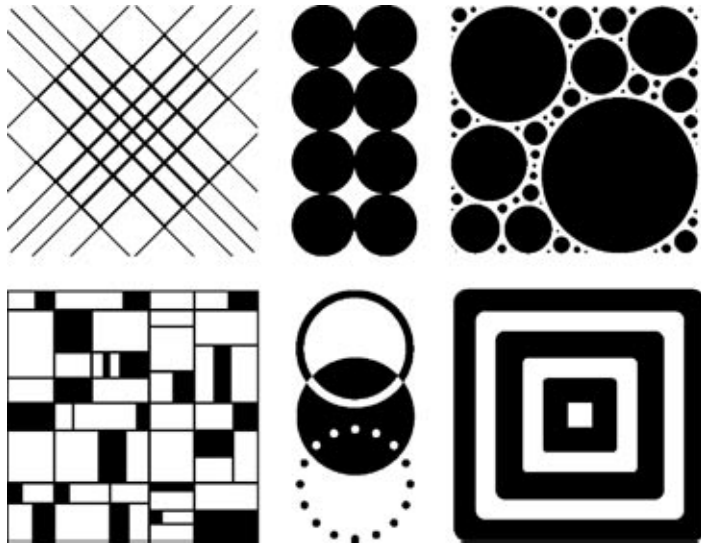


(Actual Size Above)

Love Notes

Code: ISLN

Love is the music of the heart. Make all the notes you send resound with the music in your heart; these stamps make it easy for you to play that tune in the key of love.



(Actual Size Left)

Metro Squares

Code: ISMS

These fashionable and ultra modern images are suitable for framing in the Metropolitan Museum of Art. With crisp and clean lines accompanied by smooth curves reminiscent of urban textures and elements, these funky backgrounds also fit perfectly on our square Technique Tiles. Fantastic for page backgrounds or unique embellishments, you'll love the breath of fresh air offered by this ultra cool stamp set.



(Actual Size Left)

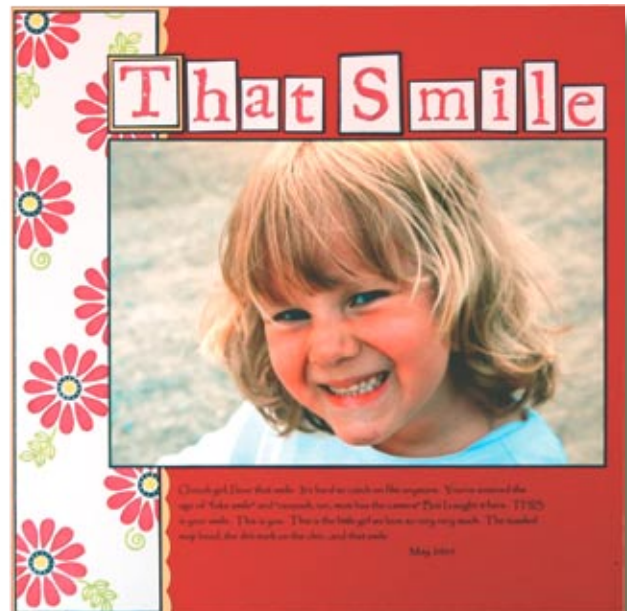
Olde World Squares

Code: ISOW

Timeless and unforgettable, these background squares will dramatically enhance travel memories, wedding and baby projects, as well as add charm and class to nouveau distressed projects. Our Olde World Squares fit perfectly on our 1.5 inch square Technique Tiles. Or stamp them across a piece of cardstock to make a sophisticated background for your next project.

Hope Live True
 .Believe-Learn.
 Beauty Imagine
 -Laugh.Cherish-
 Friends Family
 .Journey.Dreams
 Explore Inspire
 .Love-Discover.

*Andiamo a letto che fa
 poco si spegne la luna,
 noi sotto la coperta e il
 quadro di orate si fa buio
 allora iniziamo a parla
 le parole suonano fin*



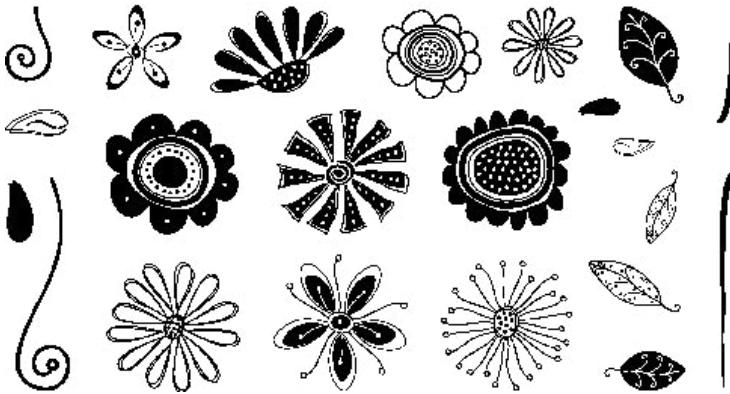


(Actual Size Left)

Pieces of Paisley

Code: ISPP

You'll be amazed by the things that you can make with these 8 stamps. Create a unique pattern on paper or fabric. These paisley pieces provide the design elements you need to make lots of imaginative projects.

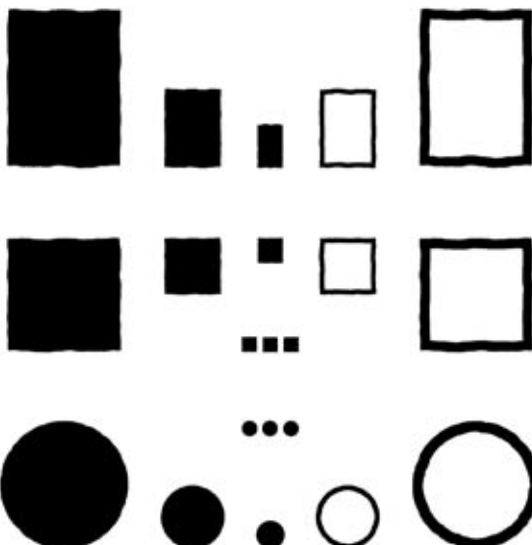


(Actual Size Above)

Petal Pushers

Code: PETA

These stamps are artistic and whimsical with a hand-drawn appearance. Pair them with our Just Picked image stamps to push the limits on your petal potential.

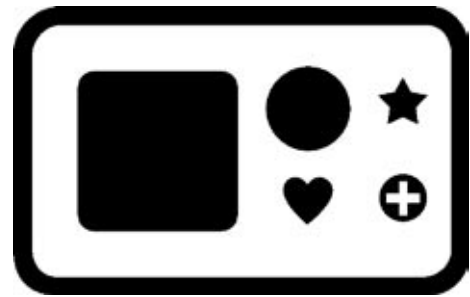
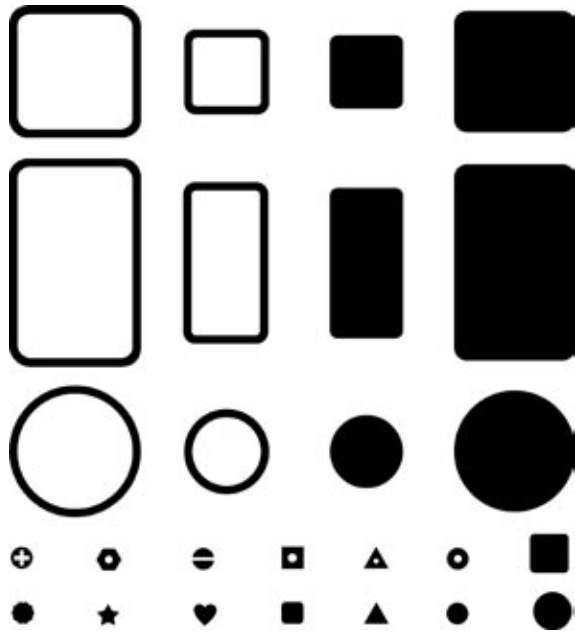


(Actual Size Above)

Rough and Tumbled

Code: ISRT

The look of tumbled marble tiles or an old brick building — these stamps go either way. They make great shadows, frames, and patterned paper. And of course, they are sized to work with our alphabets.



(Actual Size Above)

Shadows, Rings and Little Things

Code: ISSR

The solid shapes make great shadow stamps. The rings can be used to make rimmed tags. Both are sized to work great with our large and medium alphabet sets. You can also use these stamps to create patterned paper, eyelets, rivets, brads, and more.

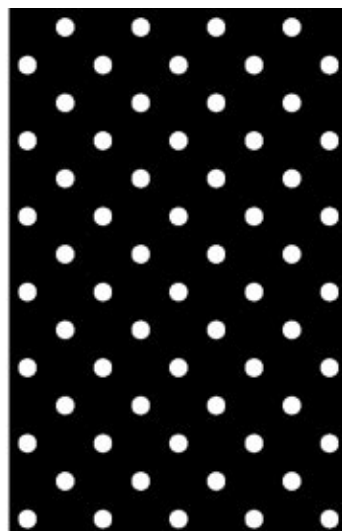
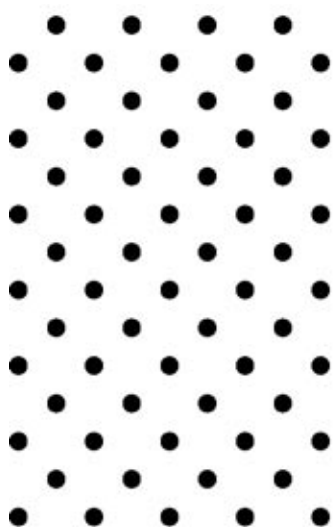


(Actual Size Left)

Spin Cycle

Code: ISSC

Just think about the possibilities for these two dizzying spiral stamps. Splatter them in bright colors across a fun tag. Tile them over a whole page as a background. Emboss them with silver to add elegance to an album cover. Or make a unique pencil holder for your child's teacher using an altered paint can. Whatever you do, give `em a whirl!



(Actual Size Left)

Swiss Dots

Code: ISSD

A simple yet elegant wedding album. Completely adorable blue dots for your new little boy's birth announcement. Cute pink dots on an invitation to your daughter's next tea party. Or a mixture of colored dots on a fine linen napkin for your table. We can't wait to see what you make with these stamps!

Technique Tuesday Clear Blocks

Technique Tuesday Clear Blocks are specially designed to make stamping easier. Our blocks are the product of a sophisticated manufacturing process that achieves a completely clear finish. Unlike acrylic blocks from other companies, our clear blocks are smooth and rounded on all corners, so there are no sharp points, jagged edges, or rough saw cuts that could irritate your fingers. And instead of only ½ inch of thickness, our blocks are a full ¾ of an inch thick so they are easier to grasp and comfortable to hold for a more accurate and enjoyable stamping experience.



Clear Block – 0.75 x 2 inch

Code: CB75x2

Small stamps? Use a small block. This little beauty works great for single letters or whole words using our small-size letters. It also works great for individual letters from our medium-sized sets. Plus, it's versatile enough to use with most of our "Words We Love" stamps.

Clear Block – 1.5 x 1.5 inch

Code: CB15x15

This crystal clear block is sized for single letters from our large alphabet sets or short words from our medium or small alphabet sets. If you're on a budget, this is a good starter block.



Clear Block – 2 x 3 inch

Code: CB2x3

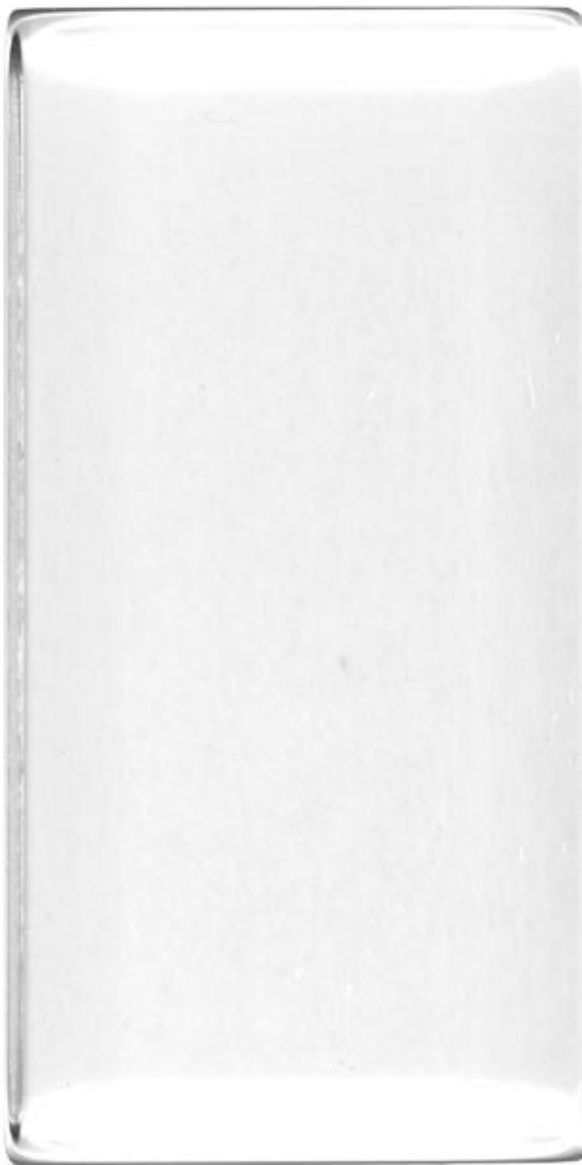
This may be our most versatile block! It works with individual letters from our extra large and large alphabet stamp sets, the frames and shadow stamps that come with our large alphabet sets, and our image stamps. Our medium alphabet stamps line up perfectly along the narrow side of this useful block.

Clear Block – 1.5 x 6 inch

Code: CB6x15

If you want to stamp entire words at one time and like to work fast, you'll want a longer clear block. This block is 1.5 inches wide by 6 inches long – big enough to handle most words using letters from our large and medium-sized alphabets. You'll love how fast you'll be able to work.





Clear Block – 3 x 6 inch

Code: CB3x6

Stamp whole words, even with our extra large alphabets! This is our biggest block yet! If you are an experienced stamper, this may be the block for you.

Clear Block – 1.5 x 10 inch

Code: CB10x15

If you want to stamp long words using our large-sized alphabet stamps, or several words at a time using our medium sets, this is the block you want. You'll be the fastest stamper yet.



What block should I choose?

If you are on a tight budget, start by choosing your stamps. Then choose the block that is appropriate for the size of the stamps that you are purchasing. It works best to choose a clear block that is slightly larger than the stamps that you are going to use. If the block is a lot larger than the stamps, you may get ink on the block, which could end up in the wrong place on your project. If you use a block that is smaller than your stamps, you may get an uneven impression where the stamp is not supported by the block. If you are purchasing more than one set of Technique Tuesday Clear Stamps, consider purchasing two blocks. We recommend our 1.5x6 and 2x3 inch blocks. With these two blocks you can stamp individual letters, entire words, or any of our image stamps. Once you have these two blocks, you'll probably never need to purchase another clear block!

Technique Tuesday Ink Pads

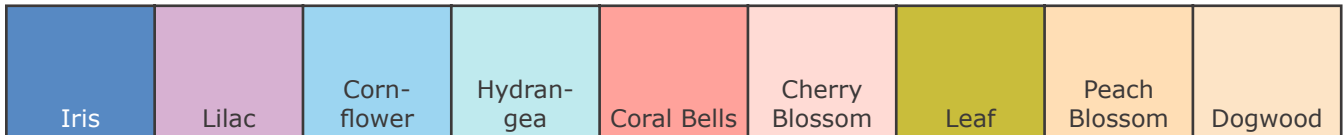
Technique Tuesday Ink Pads are ideal for most stamping projects. Scrapbookers, card-makers, and altered artists want the fast drying convenience of a dye-based ink. But... they also want the archival properties of pigment ink, which typically dries more slowly. Our ink combines rich pigment with premium dye in a formula that will adhere to practically any surface. It dries instantly on paper and other porous materials, and with heat setting, works beautifully on glossy surfaces such as vellum, buttons, shrink plastic, transparencies, metal, glass, and more.

We've grouped our 36 vibrant ink colors into four color families. Each family includes nine 1-inch, raised ink pads in individual plastic cubes that make it easy to ink-up any size stamp. All of our ink colors produce crisp, waterproof stamped images. Our inks are acid-free, archival, and colorfast.

Beautiful Basics Code: ICBB



Spring Flowers Code: ICSF



Precious Gems Code: ICPG



Earth Essentials Code: ICEE



(Colors shown may vary slightly from actual ink colors.)



Watermark and Embossing Ink Pad

Code: ICWE

This 1-inch-square ink pad is incredibly versatile! Stamped on dark cardstock it creates a watermark image. Stamp this ink on lighter-colored cardstock and swab over it with chalk and the stamped image pops off the page. And it's ideal for heat embossing.



Black Ink Pad

Code: IBLA

Color is great but you probably use more black ink than everything else combined. So, here it is all by itself in basic black, a 1-inch-square ink pad.

Technique Tuesday Clear Stamp Accessories

In addition to our wonderful stamp sets, Technique Tuesday carries an array of accessories that are designed to help you store and care for your clear stamps. Our portfolio not only provides a convenient way to store your stamps, it also protects your stamps from dirt and sunlight, which can damage your stamps. And our stamp cleaning solution and scrubber will also help protect your stamps. With proper cleaning and wise storage choices, your stamps will last for many years.



Technique Tuesday Portfolio

Code: PORT

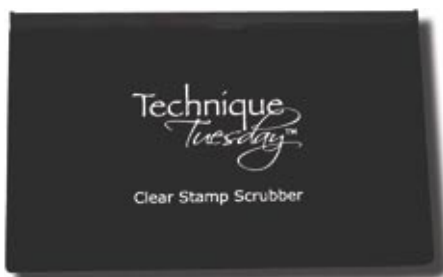
Do you just want a place for everything and then want everything in its place? And then what if you want to take everything with you? With two gusseted compartments, internal pockets, both a cushioned handle and removable shoulder strap, this stylish case can hold over 750 clear stamps, four ink kits, and all of your blocks. What more could you ask for? It comes in a rich navy blue with yellow embroidery. Lightweight yet durable, our portfolio is the ultimate stamp storage and transportation system.



Technique Tuesday Clear Stamp Cleaner

Code: SC02

For the most thorough cleaning, and to preserve and protect your clear stamps, use Technique Tuesday Clear Stamp Cleaner. Our cleaner contains no harsh abrasives or alcohol that can damage your clear stamps. Use it on the back of the stamps to restore the stamp's stickiness. It can also be used to clean the clear blocks and the back of the storage sheets where the stamps are stored. It is packaged in a 2 ounce spritzer bottle and works best when spritzed on the Technique Tuesday Clear Stamp Scrubber.



Technique Tuesday Clear Stamp Scrubber

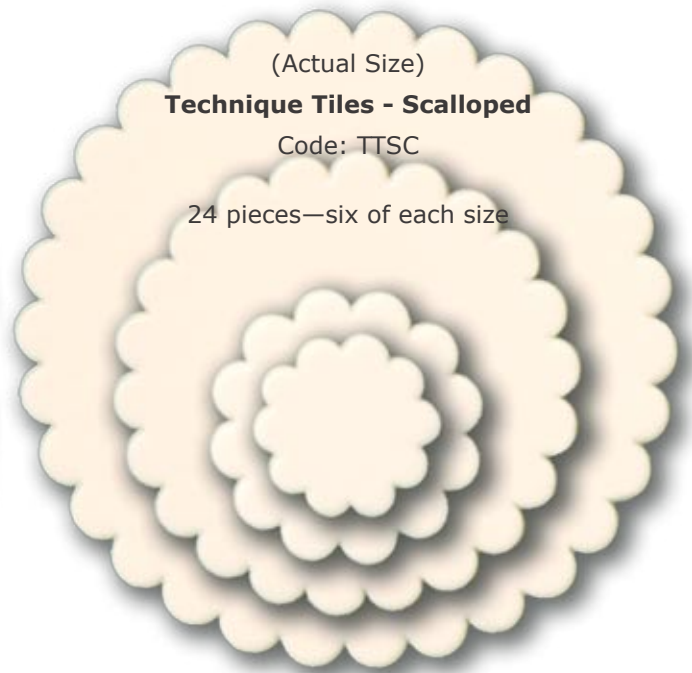
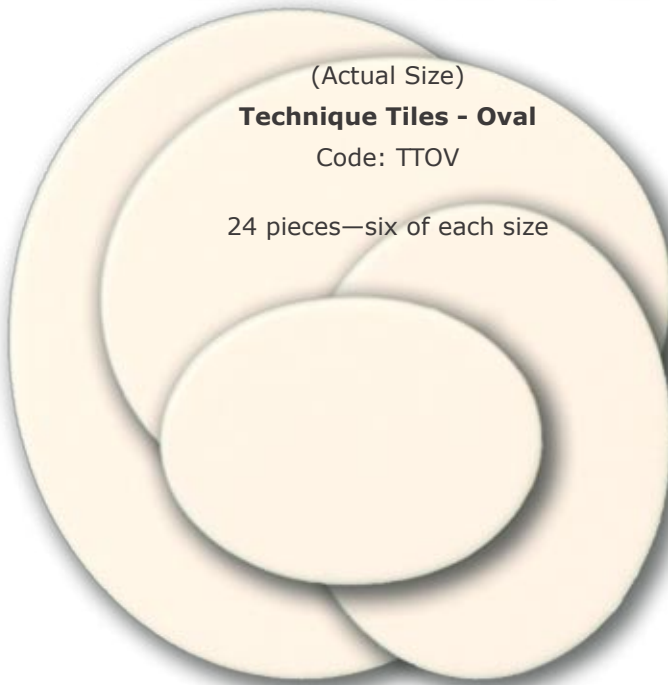
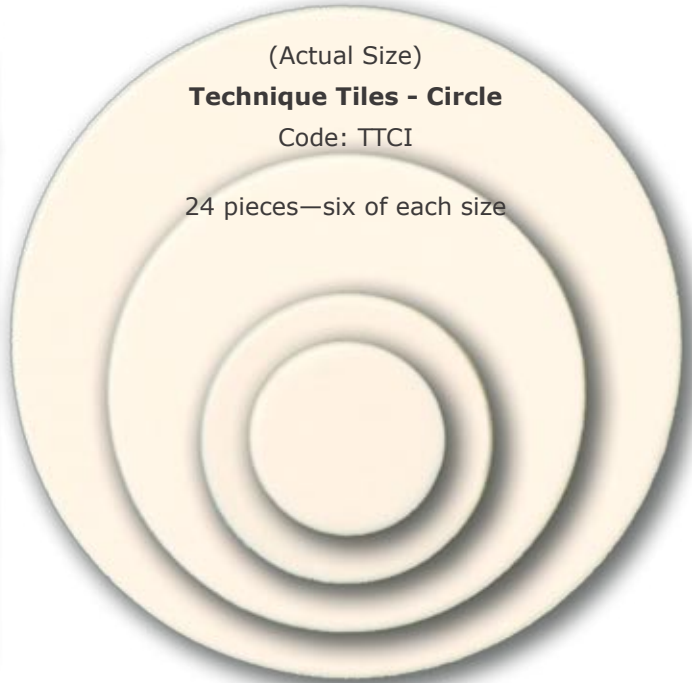
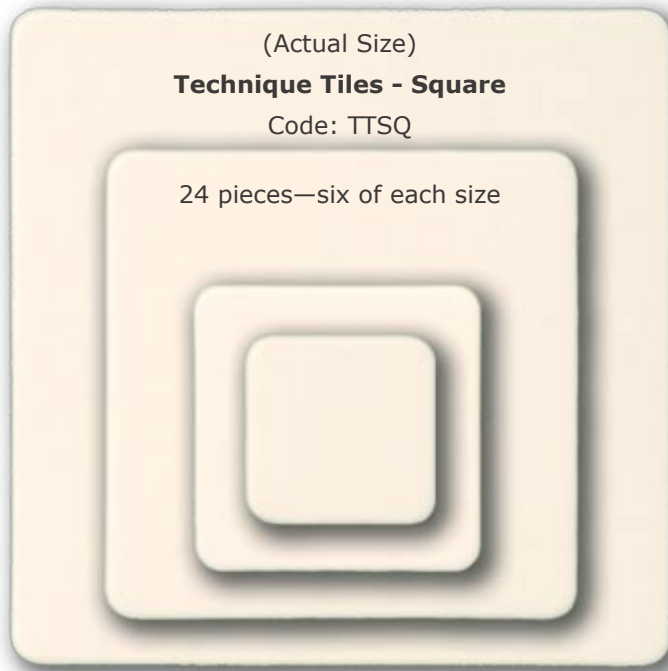
Code: SCR0

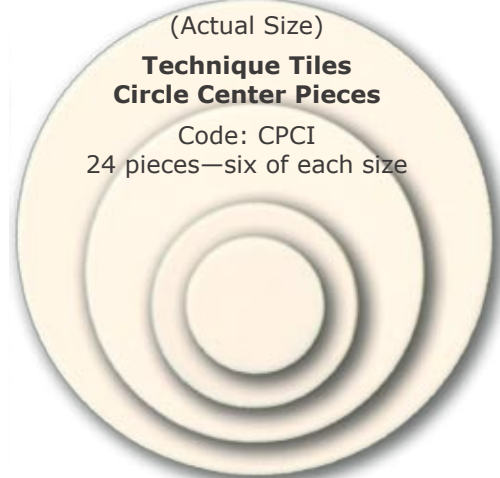
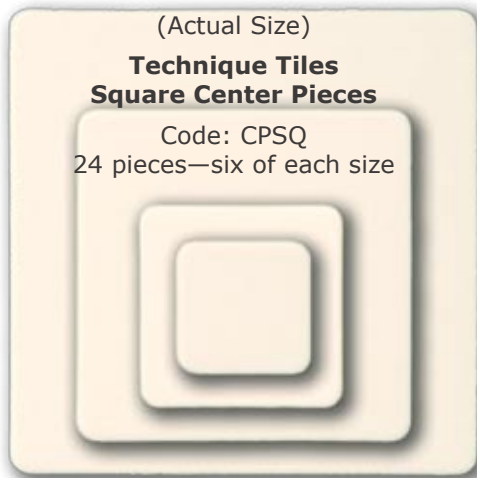
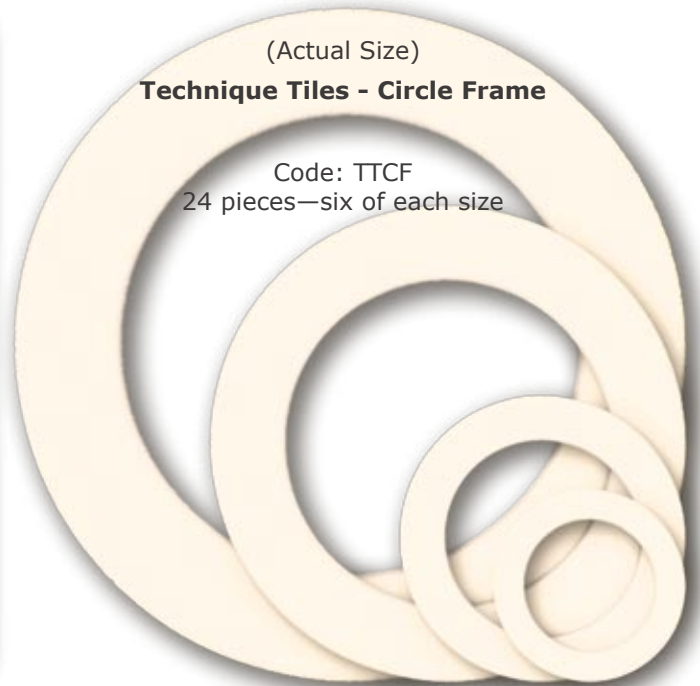
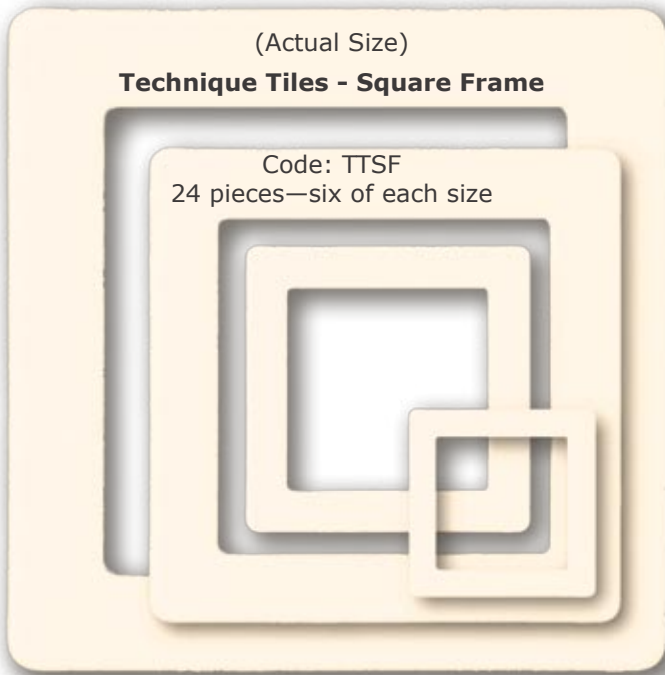
The Technique Tuesday Clear Stamp Scrubber has cleaning pads in both the lid and the base for the most thorough cleaning of your clear stamps and blocks. Use one side to clean (with a little spritz of the amazing Technique Tuesday Clear Stamp Cleaner) and the other side to dry your stamps. Without a doubt, this combination is the best cleaning method available for your clear stamps.



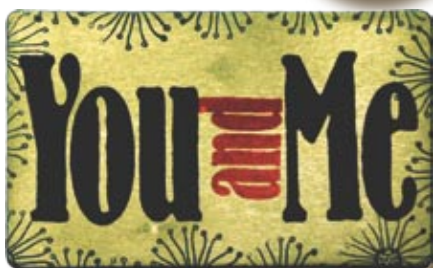
Technique Tiles

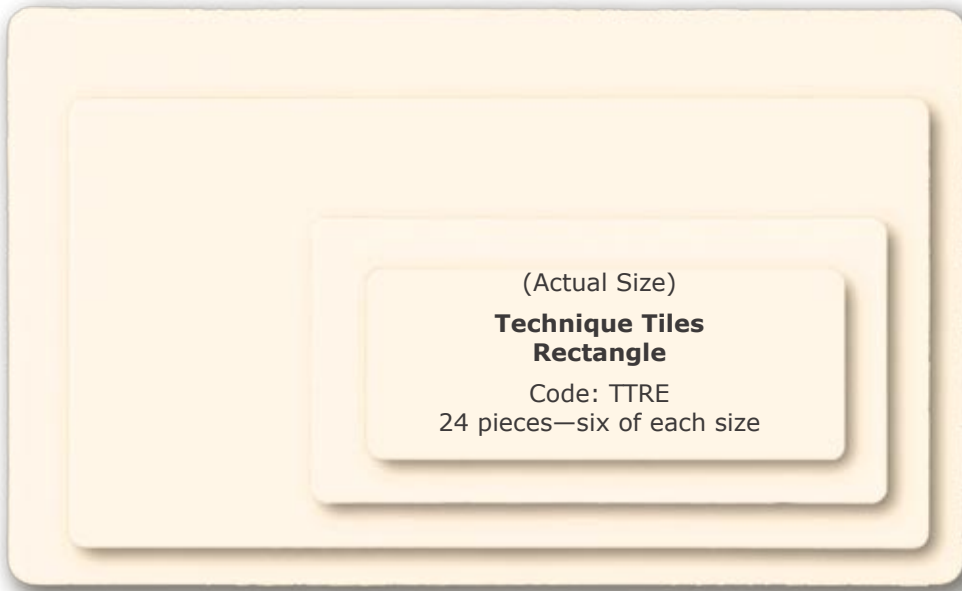
Adding dimension and texture has never been easier! Technique Tiles are not brown like chipboard, nor brittle like ceramic; thinner than acrylic, thicker than cardstock—you've got to see them to understand how versatile these tiles really are. The clean, creamy background is perfect to use as-is or you can easily add your own color. Drag an ink pad around the edges or across the entire tile, swipe them with paint or enhance them with any other scrapbooking medium. These little gems are easily transformed from basic to beautiful in seconds. Technique Tiles are lightweight and are only $\frac{1}{16}$ -inch thick (1.6 mm). They come in eight fantastic shapes and are sized to coordinate with Technique Tuesday alphabet, word, and image stamps.





Sized perfectly to fit in the center of our Technique Tile frames, these center piece tiles create infinite opportunities for layering colors. Nest a center piece in its coordinating frame for a fabulous addition in your crafting projects.





(Actual Size)
**Technique Tiles
 Rectangle**
 Code: TTRE
 24 pieces—six of each size



(Actual Size)
**Technique Tiles
 Diamond**
 Code: TTDI
 24 pieces—six of each size



Technique Tiles - Variety Pack

Code: TTVP

What a great deal — 40 small Technique Tiles in a variety of shapes. This assortment comes packaged in a 4x5-inch, hang-hole bag.



- Twill Tape - Skinny - White** Code: TTSKWT
- Twill Tape - Skinny - Natural** Code: TTSKNL
- Twill Tape - Narrow - White** Code: TTNRWT
- Twill Tape - Narrow - Natural** Code: TTNRNL
- Twill Tape - Wide - White** Code: TTWDWT
- Twill Tape - Wide - Natural** Code: TTWDNL

Twill tape is one of the hottest things going into scrapbooks, onto cards, and embellishing altered art projects. With our stamps and twill tape, you can create unique titles and accents. Other brands of twill tape are often made from a blend of materials or have a finish that causes stamped images to bleed. Our twill tape is 100% cotton so your stamped images will be crisp and vibrant for years to come. Our wide twill tape is 1.5 inches wide and is sized to fit our large alphabet stamps. Our medium letter stamps and Words We Love sets fit perfectly on our narrow twill tape which is 0.75 inches wide. And now we have an even narrower "Skinny" twill tape at only 0.5 inches wide. The twill tape comes on a 72 yard roll.



Frequently Asked Questions

How do I get started stamping with Technique Tuesday Clear Stamps?

Technique Tuesday Clear Stamps come on lightweight storage sheets and are ready to be used. You don't need to add a cushion or trim these stamps. You can just start creating! When you are ready to stamp, gently peel a clear stamp off the storage sheet and put it on a clear block. If you want to stamp faster, place several stamps on a larger clear block to stamp entire words or phrases. When you are done stamping, clean your clear stamps. Then peel the stamps off the clear block and return them to the storage sheet.



What is the best way to clean Technique Tuesday Clear Stamps?

The easiest way to clean your stamps is while they are still on the block. Just spritz a small amount of Technique Tuesday Clear Stamp Cleaner onto a Technique Tuesday Clear Stamp Scrubber and rub your stamps to clean them. Technique Tuesday Clear Stamp Cleaner not only provides the most thorough cleaning, but it also will help to preserve and protect your clear stamps. In a pinch, you can use water and mild hand soap to clean your stamps. Do not use any alcohol or oil-based products to clean your stamps. Once you've cleaned them, dry the stamps and blocks using our stamp scrubber or with a lint-free towel. With proper cleaning and wise storage choices, your stamps will last for many years!

What kind of ink should I use with Technique Tuesday Clear Stamps?

We recommend using Technique Tuesday Ink Pads, and you can learn more about them on page 34. However, you can also use any ink pad, marker, paint, or dye that is designed to be used with art stamps. Some stamping enthusiasts use solvent-based inks, bleach, and other caustic materials. These materials are hard on all types of stamps. If you choose to use these harsh products, clean your stamps immediately and very thoroughly. If you'd like to learn more about how to use Technique Tuesday Clear Stamps with paint, markers, and dyes, visit our Tips and Techniques center on our web site.

What is the best way to apply ink to a stamp?

If you are inking up a very small stamp, it often works best to tap your stamp onto the ink pad. For larger stamps, start by placing your clear block on a flat surface with the stamp side up. Then tap your ink pad down directly onto the surface of your stamp. Use firm and even tapping pressure. Consider tapping first in one direction and then the other to get a uniform coating of ink on your stamp. Don't twist your stamp or drag it across your ink pad. Remember too much ink often is just as bad as not enough ink.

Do Technique Tuesday Clear Stamps ever quit sticking to the clear block?

If your stamps stop sticking to the clear block or to the storage sheet, it means one of two things: 1) either the stamp, especially the back of the stamp, needs to be cleaned, or 2) the back of the stamp is wet. To restore the stickiness, clean the backs of the stamps. You may also need to clean the clear blocks and the back of the storage sheets where the stamps are stored.

Will Technique Tuesday Clear Stamps stay crystal clear?

Some colors and some types of ink will tint or stain your clear stamps. As long as you thoroughly clean your stamps, the transparent color will not affect your next stamped image.



In some ways, tinted clear stamps are a benefit. When the stamps are new, they are so clear that it may be hard to tell what the stamp image is and it is also easier to lose them. Once the clear stamps become tinted, they are easier to see and you can tell what the stamped image will be. One of our design team members tints her stamps purple so that she can tell which stamps are hers. If you'd like to tint your stamps a lovely lilac color, use the purple from our Beautiful Basics ink kit the first time that you use your stamps.

Just as cardstock, paint, and most materials change color when exposed to sunlight, clear stamps are also effected by UV light. If you want your stamps to stay completely clear, store them away from all UV light sources. If your clear stamps are exposed to UV light they may develop a yellowish tint. The yellowish tint is cosmetic and will not effect the performance of your stamps. However, extended exposure to UV light will damage almost any material. We recommend that you not store clear stamps near a window or other UV light sources.

How should I store my stamps?

Each Technique Tuesday stamp set comes on a storage sheet which provides an index to help you keep your stamps organized. The large sized storage sheets fit into any standard 3-ring binder. For the best storage solution, consider a Technique Tuesday Portfolio. This zippered portfolio not only provides a convenient way to store your stamps, it also protects your stamps from dirt and sunlight. One portfolio can hold over 750 stamps, plus a number of ink pads and several blocks. It's the ultimate stamp storage and transportation system!

How are Technique Tuesday Clear Stamps different from other clear stamps?

Just as there are textured and plain sheets of cardstock and both detailed embellishments and inexpensive substitutes, there are also premium clear stamps and inferior clear stamps. Our stamps may look similar to other stamps made from acrylic, molded vinyl, or other inferior materials, however many of these other substances won't stick to a block and don't produce well-defined stamped images. The material that we use to make our clear stamps allows them to firmly cling to the surface of a block. This advanced material also allows the ink to cover our stamps without beading or bleeding to produce crisp, clean stamped images.

In addition to being made from the highest quality materials, the process that we use to make our stamps produces a deeply etched stamp that doesn't have extra material surrounding the stamp image. Other stamps often have wide areas around the images that will catch extra ink that can easily mar your project. The special process that we use allows our entire stamp to be the shape of the main image. We also have a vigorous quality assurance program. We inspect each of our clear stamps to ensure that every stamp meets the highest possible quality standards.

What if I want to change the shape of my clear stamps?

Our clear stamps are flexible. As you place them on a block, you can bend and contort the stamps to change the look of your letter and image stamps. Although we haven't heard of this actually being a problem, we don't recommend that you leave them in a bent or contorted shape for too long. It's probably best to return the stamp to its original shape as soon as you're done stamping. So have fun! Add curves where there weren't any. Straighten things out where there were curves. Or change the angles to make new shapes. Be gentle but firm to add your own special twist to your stamped images.



Are people allowed to sell things made using Technique Tuesday Clear Stamps?

Yes. We are excited that people want to use Technique Tuesday Clear Stamps in their artwork and for their craft projects. Through our angel policy, we grant permission in the form of a limited license to use Technique Tuesday exclusive copyrighted stamp images to create artwork and crafts that they can sell. Each project created for sale must be personally and individually hand stamped by the selling artist and may not be reproduced or copied in any form by any means. Please see our complete angel policy which is available online at www.TechniqueTuesday.com.

If I lose a letter or need more can I purchase individual letters?

Yes. Visit our website for more information: www.TechniqueTuesday.com.

Do you guarantee Technique Tuesday products?

At Technique Tuesday, we are proud of our products and guarantee our products to be free from manufacturing defects. When you get your Technique Tuesday products, please inspect them. If you notice something wrong, follow the steps outlined in our return policy on our web site to initiate an exchange.

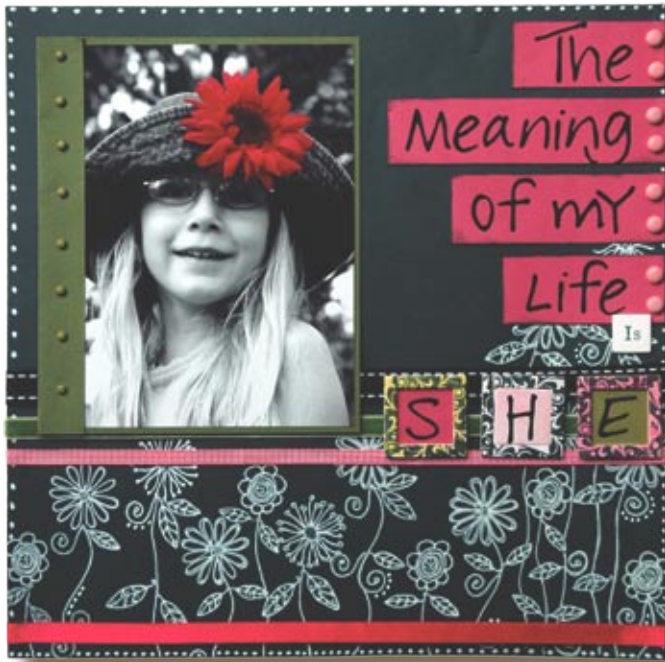
Why is your company named Technique Tuesday?

Technique Tuesday started several years ago. Our founder had a baby and was taking lots of pictures of her precious little girl. Rather than just scrapbooking her photos, she decided to learn at least one new technique on every single layout. Just in case that wasn't enough to keep her busy, every Tuesday afternoon she invited over a friend to try out new techniques. As their children grew, the moms and kids all started calling these enjoyable afternoons Technique Tuesday. And to make sure that our founder doesn't turn into a boring business person, we still meet many Tuesday afternoons to explore new scrapbooking and stamping techniques.

Where can I learn more about using Technique Tuesday Clear Stamps and products?

You can visit our web site at www.TechniqueTuesday.com! Or visit one of the retail stores listed on our store locator page.



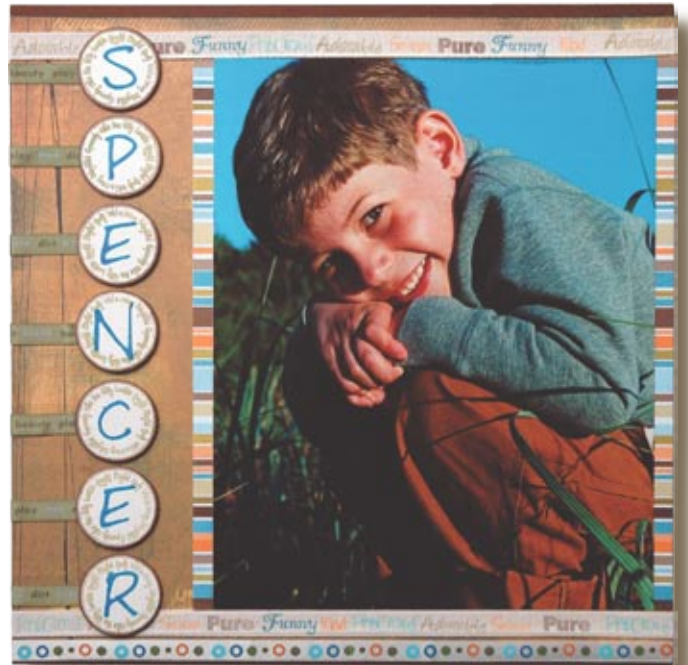


Tip: {Glaze Pens}

A white glaze pen adds the perfect dimensional enhancement to our Petal Pushers floral stamps. After stamping with the white ink pad from our Beautiful Basics ink kit, we maintained the hand-drawn look of the stamped images by tracing over the flowers with the glaze pen to give a glossy raised finish. Multiple coats of glaze produce a more glossy appearance, but wait for each coat to dry before applying additional layers.

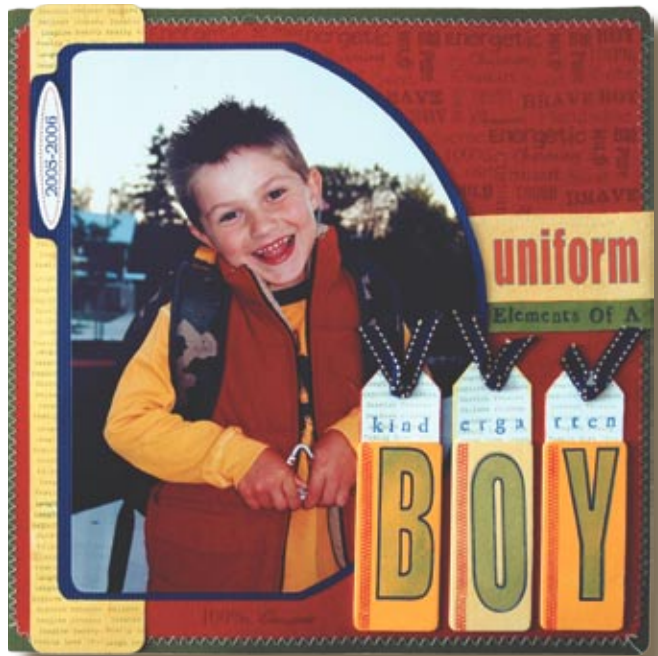
Tip: {Tiles & Twill}

Technique Tiles offer a perfect dimensional enhancement without being too lumpy. In this example, we used our Infinite Wisdom stamps on Technique Tiles to create a custom ring around our title letters. Then we used our Words We Love stamps to create custom messages, phrases, and quotes on Technique Tuesday twill tape. An ink pad dragged across the twill adds some quick and fun color to the otherwise pure white twill.



Tip: {Acrylic Paint}

Acrylic paint is available in hundreds of colors. Choose the perfect colors to enhance your photos or project. Use a small foam brush to apply a light coat of paint to one stamp at a time. Too much paint will produce a blurred and gloppy image. Acrylic paint dries very quick so immediately stamp the image after applying the paint. For easiest cleanup, wash your stamps immediately. If the paint dries on your stamps, soak the clear stamps in warm water for 3 to 5 minutes and the paint will clean up nicely.



Tip: {Dimensional Adhesives}

Dimensional adhesives offer fabulous opportunities for enhancing stamped elements. Use the fine point tip of the adhesive bottle to trace around stamped elements for a clear gloss, epoxy-like outline. Or fill in the outline for a smooth glass-like appearance. When using these dimensional adhesives, it is best to do multiple thin coats and wait for each layer to dry before re-application.



Technique Tuesday™

Clear Stamps and Accessories



4888 NW Bethany Blvd, Suite K5 #361 Portland, OR 97229

(503) 644-4073

www.TechniqueTuesday.com

